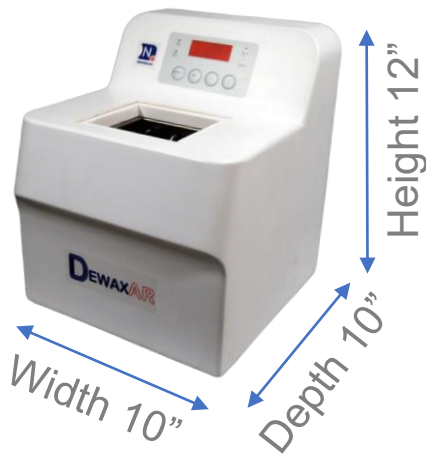




Q-STAIN[®] X Autostainer

A New Rapid Solution for IHC/ICC Testing

DewaxAR[™]



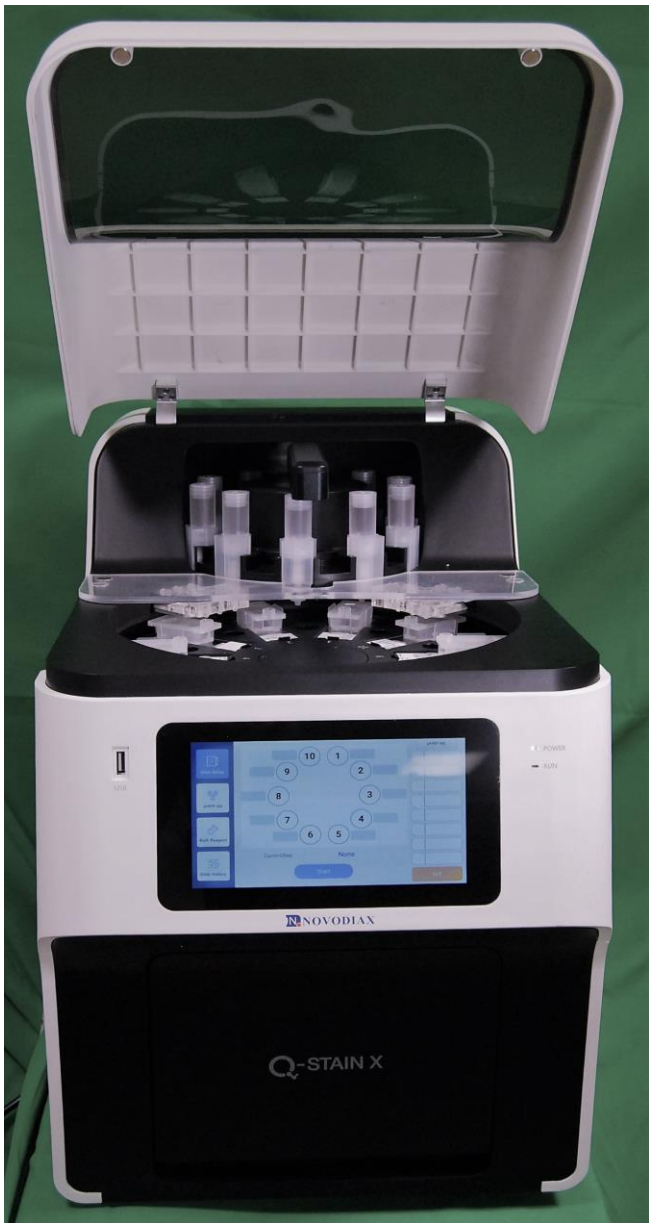
Rapid · Simple · Flexible



Innovations: Performs both IHC and HE Functions

Rapid TAT: For frozen sections ~ 15 min
For FFPE section 45 ~ 75 min

Easy: Automatically Process 1-10 Slides
≤ 7 antibodies in single run



DewaxAR™

For Ag Retrieval & dewaxing ~ 15 min

No need for fume hood



About Novodiox

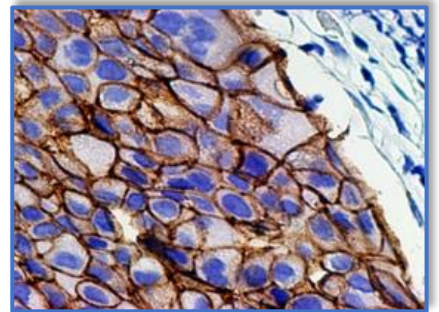
Novodiox is dedicated to advancing tissue-based diagnostics and rapid assays for immunohistochemistry (IHC) through our innovative detection platform of polymerized HRP. Based on this technology we have developed a series of highly sensitive polymer conjugates that are organized into two product categories: ihcDirect[®] and ihcPrime[™].

ihcDirect Technology Related to CDx

Novodiox's Direct IHC patented technology is inherently superior for companion diagnostic (CDx) testing. This approach directly conjugates our sensitive HRP polymer to the drug/antibody translating into rapid testing and fewer interferences, e.g. false positives caused by unwanted interactions with secondary antibodies.

Q-STAIN X Automated Stainer

This fully automated instrument system is designed to implement our novel direct IHC products. The system is simple to operate and contains several patentable inventions.



ihcDirect Herceptin in breast tissue

Contact Us:

Novodiox, Inc.

3517 Breakwater Ave.

Hayward, CA 94545

Tel: (510) 342-3043, (888) 439-2716

Fax: (510) 254-6704

Sales@novodiox.com

Intl-Sales@novodiox.com



Technical Parameters

Categories	Items	Parameters	Notes
Applications	Immunohistochemistry and H&E staining to evaluate tissues for surgical margins, biopsy - cytology specimens, fresh frozen tissue, and FFPE sections		
Functions & Specifications	Frozen Protocol	16-23 min. staining time	
	FFPE Tissue Protocol	45-75 min. staining time	~ 60 minutes turnaround time using DewaxAR
	HE staining time	5-7 min. staining time est.	Varies with hematoxylin reagent formulation
	Slide Capacity	10 slides per run	Performed at RT-37°C
	Reagent Carousel	≤ 7 barcoded antibody reagent cartridges plus blocker, chromogen, or ihc Enhancer	Remove reagents from system when not in use
	Slide Cartridges	Manage reagent dispense onto tissue from actuator and pumps 2 Sizes planned depending upon size of tissue desired	Slides attached to slide chambers then placed in the carousel which rotate to position slides
	Antibody Reagent Cartridge Dispense	~ 100 µl and 5 mL capacity	
	Bulk Reagents	6 Bulk reagent 1L bottles	Reset volume levels through software
	Reagent Dispense Methods	- Antibody and chromogen reagents dispensed by gravity via actuator. - Wash Buffer, H&E chemicals / ETOH dispensed via pumps	- H&E rgts dispensed via precise pumps /valves - Important to prime bulk reagents before use. - Tubing changed annually
	Temperature setting is ambient	Room temperature	
	Chromogent Toxic Waste Separation	Toxic waste is separated during processing	Two separated waste tubing's, DAB waste are collected separately
	Display and control	LCD touch screen	Android Operating System
Voltage and frequency	100-240V, 50-60Hz	Compatible to US and China market.	
Internal Control	Internal Temp Control	15-37°C Adjustable	
Environment Requirement	Humidity	<80%	
Dewax-Agn Retrieval	DewaxAR	24 slide capacity, estimated throughput 15-20 minutes	Fast high temperature antigen retrieval